

Procedure for updating a LXI 1.3 component on the E5061B network analyzer

This document describes the procedure for updating a software component of the LXI 1.3 installed on the E5061B network analyzer. If your E5061B's HDD volume label is **EL200**, **KY200**, **EL203**, **KY203**, or **KY204**, it is recommended to update the LXI component by following the procedure shown below. Updating this LXI component will ensure the system's stability in the long-term continuous operation (e.g. more than 24 hours), especially if additional software such as security software is installed and operated on the E5061B.

You can check the E5061B's HDD volume label with Windows Explorer as shown below. Press [**Save/Recall**], **Explorer**, and check the volume label indicated at the C: drive.

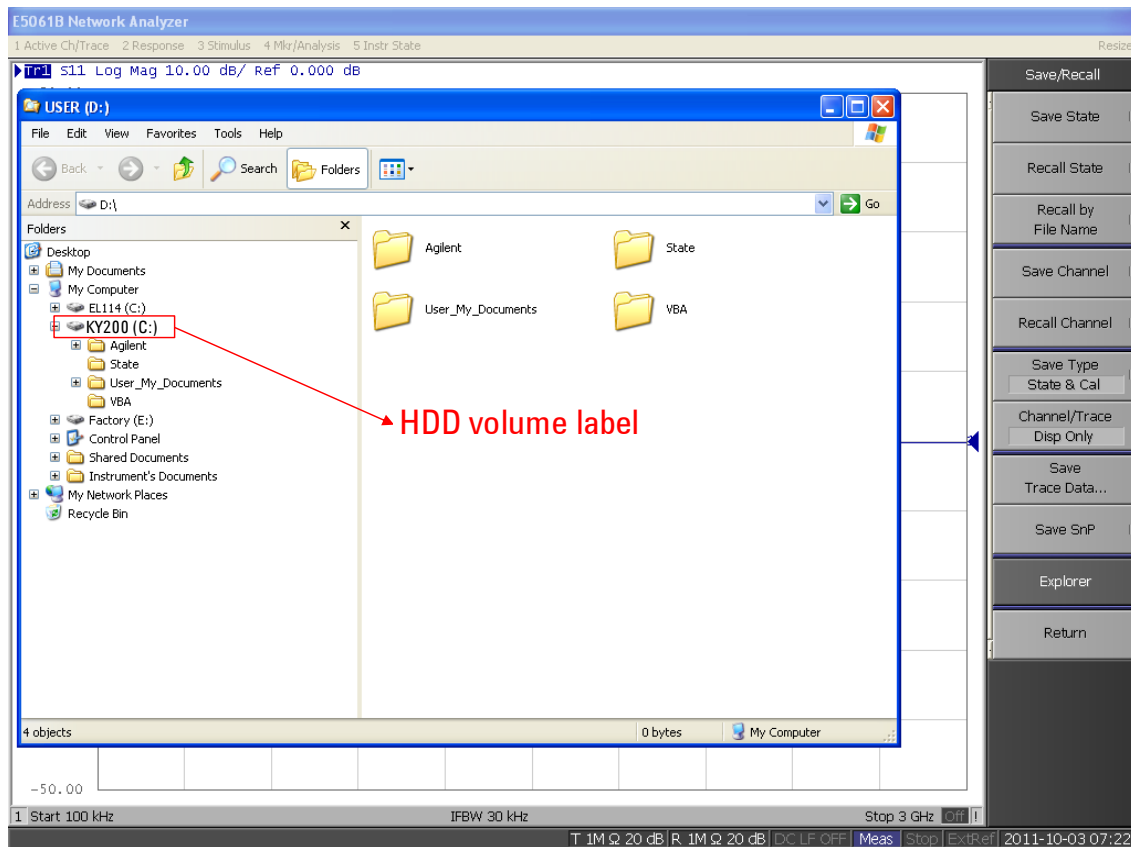


Figure 1. HDD volume label (example of “KY200”)

NOTE:

Do not perform this LXI component update for the E5061B that has different HDD volume label from the ones listed above.

Contents of the compressed files

- Setup.vbs Script for updating the LXI revision to 00.00.23
- AgilentLxiSetup.ms_ LXI component installation program, main body
- Readme.pdf Updating procedure (this document)

NOTE:

The extension of “AgilentLxiSetup” was intentionally changed to “ms_” for this LXI component update. Do not change it to “.msi”.

Procedure

1. Update the E5061B's firmware revision to A.02.06 or above.

The E5061B's firmware must be updated to revision A.02.06 or above before updating the LXI component. (If you have already updated your E5061B to A.02.06 or above, Skip this step and go to the step-2 “Exit the E5061B firmware”.)

- 1-1) Download the E5061B firmware revision (A.02.06 or above) from the download site to your PC. It is prepared as a self-extracting file (E5061B_xx.xx.exe).
- 1-2) Run “E5061B_xx.xx.exe” to extract “E5061B.msi” on your PC, and copy it to the E5061B's D: drive.
- 1-3) On the E5061B, press **[System]**, **Service Menu**, and **Update Firmware**.
The password dialog box will appear.
- 1-4) Type e506xa as the password, and click OK.
- 1-5) Select “E5061.msi” in the D: drive, and press Open. The windows installer will appear. Follow the instruction of windows installer to install the firmware.
After the installation is finished, the instrument will restart.
- 1-6) Press **[System]**, and **Firmware Revision** to confirm the firmware revision.

2. Exit the E5061B firmware.

Press **[System]**, **Service Menu**, **Exit**, and select “OK” to finish running the E5061B firmware.

3. Update the LXI component to the new one.

2-1) Download “E5061B_LXI_0.0.23.exe” from the download site to your PC. It is prepared as a self-extracting file.

2-2) Run “E5061B_LXI_0.0.23.exe” to extract the following files.

Update.vbs, AgilentLxiSetup.ms_, Readme.pdf

2-3) Copy “Update.vbs” and “AgilentLxiSetup.ms_” to the same folder location in the E5061B’s D: drive (for example, to the root of the D: drive).

2-4) From My Computer, run the script program “Update.vbs” saved in the D: drive by double-clicking on it. This script program will automatically uninstall the old LXI component (Agilent ENA LXI Setup 00.00.19 or 00.00.20) and install the new LXI component (Agilent ENA LXI Setup 00.00.23).

2-5) After the installation is finished, confirm that the new LXI component (Agilent ENA LXI Setup 00.00.23) is successfully installed (Start → Control Panel → Add or Remove Programs).

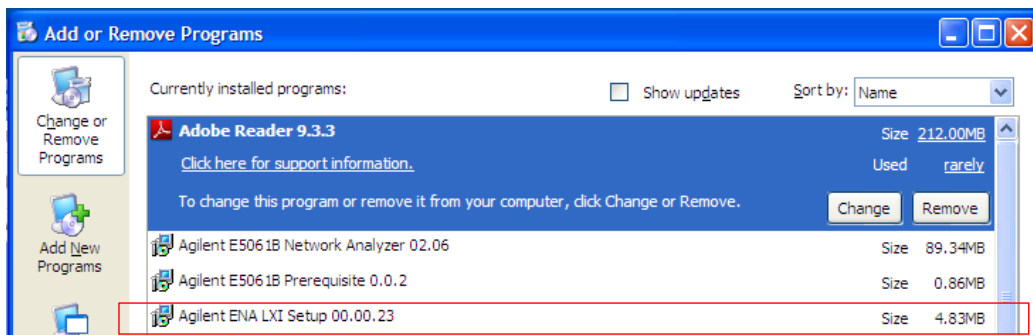


Figure 2. Confirming the LXI component installation

2-6) Reboot the E5061B firmware by double-clicking on its icon.

NOTES:

- If the system recovery is performed after the LXI component was updated to the new one, the LXI component will be restored to the original old one.

In this case, update the LXI component to the new one once again by following this procedure.

- Do not install the new LXI component without uninstall the old LXI component (for example, by changing the extension of the installation program from “.ms_” to “.msi” and executing it without uninstalling the old LXI component). Doing so will cause a malfunction of the LXI. If you encounter this trouble, perform the system recovery and update the LXI component to the new one by following this procedure.